

.....  
name of the student

# Musicianship Written Test for MA Students

2009

student's copy

## 1. Two-part dictation

Played 8 times

Lotti: Kyrie at Gloria

Musical notation for the first dictation exercise, measures 1-4. The score is in G minor (two flats) and common time. The first measure shows a treble clef with a whole note G4 and a bass clef with a whole note G3. The following three measures are empty staves for dictation.

Musical notation for the first dictation exercise, measures 5-8. The score is in G minor (two flats) and common time. The first measure shows a treble clef with a whole note G4 and a bass clef with a whole note G3. The following three measures are empty staves for dictation.

## 2. Excerpt from a romantic song

Played 8 times

Franz SCHUBERT  
Op. 5. Nr. 4.

Erster Verlust

Sehr langsam, wehmütig

Musical notation for the second dictation exercise, measures 1-4. The score is in G minor (two flats) and common time. The first measure shows a treble clef with a half note G4 and a bass clef with a half note G3. The following three measures are empty staves for dictation.

I

Musical notation for the second dictation exercise, measures 5-8. The score is in G minor (two flats) and common time. The first measure shows a treble clef with a half note G4 and a bass clef with a half note G3. The following three measures are empty staves for dictation.

VII<sup>7</sup>  
b

VI<sup>6</sup>

.....  
name of the student

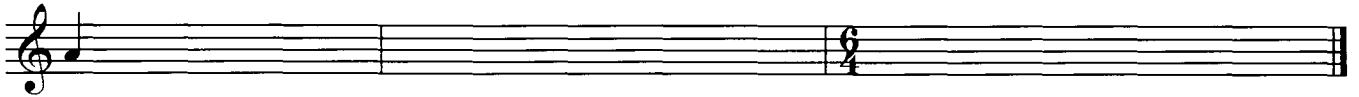
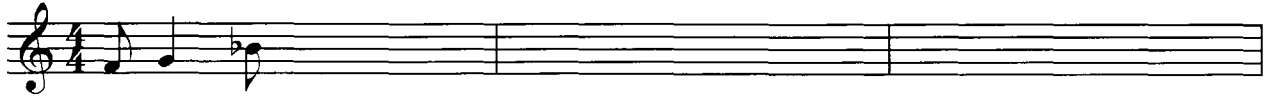
### 3. Dictation of a twentieth-century unison melody

Played 6 times

Jaakko Mäntyjärvi (1999)

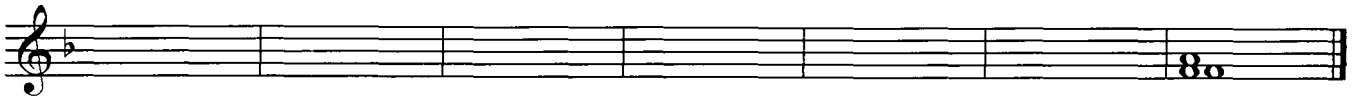
Iustorum animae

Tranquillo ♩ = 48-54



### 4. Chord progression

Played 5 times



### 5. Four-part dictation

Played 8 times

J.S. BACH: NUN FREUT EUCH, LIEBEN CHRISTEN G'MEIN, CHORALE

(Excerpt)

Soprano

Alto

Tenor

Bass

A four-part musical setting of a chorale excerpt by J.S. Bach. The setting is in G major and common time (C). The four parts are Soprano, Alto, Tenor, and Bass. The Soprano part starts with a half note G4, followed by quarter notes A4, B4, and C5. The Alto part starts with a half note G4, followed by quarter notes A4, B4, and C5. The Tenor part starts with a half note G4, followed by quarter notes A4, B4, and C5. The Bass part starts with a half note G4, followed by quarter notes A4, B4, and C5. The setting concludes with a final cadence in G major.