

Musicianship Written Test for MA Students

2009

teacher's copy

1. Two-part dictation

Played 8 times

Lotti: Kyrie at Gloria

Musical notation for the first part of the dictation exercise, consisting of two staves (treble and bass clef) in a 2/4 time signature. The key signature has two flats. The first staff contains whole rests for the first four measures, while the second staff contains a sequence of eighth and quarter notes.

Musical notation for the second part of the dictation exercise, starting at measure 5. It consists of two staves (treble and bass clef) in a 2/4 time signature. The first staff contains a sequence of quarter and eighth notes, while the second staff contains a sequence of eighth and quarter notes.

2. Excerpt from a romantic song

Played 8 times

Franz SCHUBERT

Op. 5. Nr. 4.

Erster Verlust

Sehr langsam, wehmütig

Musical notation for the first part of the romantic song excerpt. It features a vocal line and piano accompaniment. The vocal line has the lyrics: "Ach! wer bringt die schö - nen Ta - ge, je - ne Ta - ge der er - sten". The piano accompaniment includes dynamics *pp* and *fp*.

Musical notation for the second part of the romantic song excerpt, starting at measure 5. It features a vocal line and piano accompaniment. The vocal line has the lyrics: "Lie - be, ach, wer bringt nur ei - ne Stun - de je - ner hol - den Zeit, zu - rück!". The piano accompaniment includes dynamics *cresc.* and *pp*.

3. Dictation of a twentieth-century unison melody

Played 6 times

Jaakko Mäntyjärvi (1999)

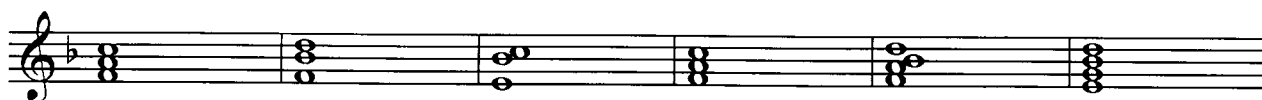
Iustorum animae

Tranquillo $\text{♩} = 48 \text{ } 54$



4. Chord progression

Played 5 times



5. Four-part dictation

Played 8 times

J.S. BACH
NUN FREUT EUCH, LIEBEN CHRISTEN G'MEIN, CHORALE

(EXCERPT)

